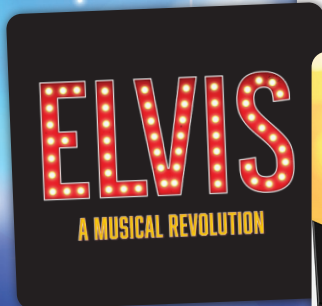
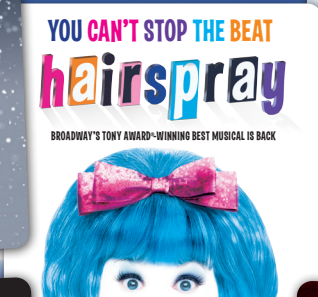
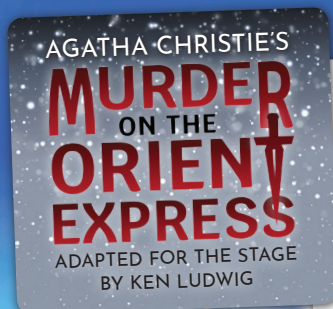




FLORIDA'S PREMIER DINNER THEATRE BROADWAYPALM

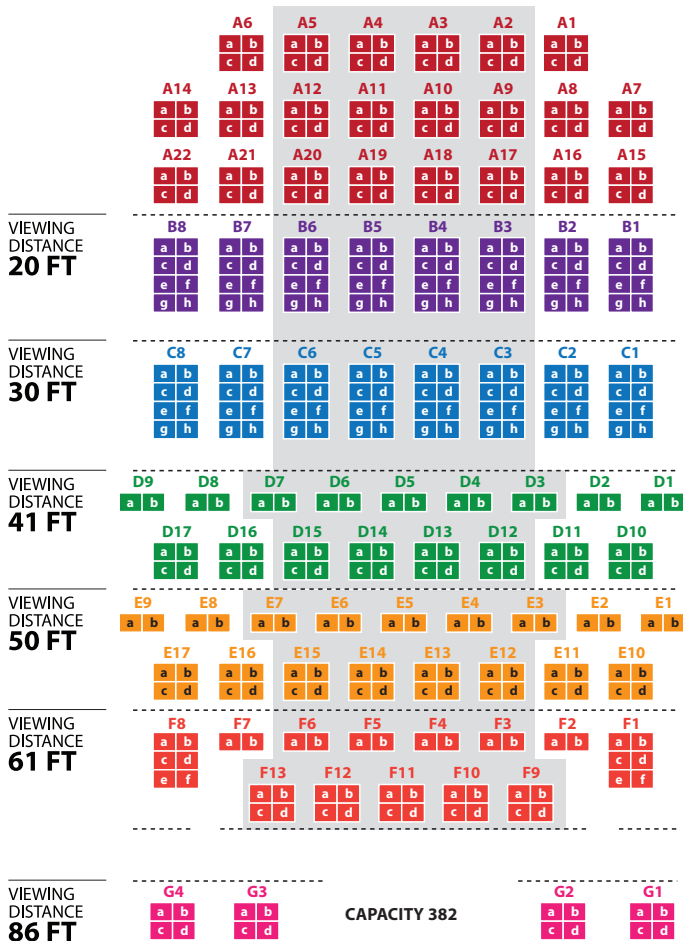


2023-2024
GROUP BROCHURE

GROUP BENEFITS & GUIDELINES

- Group rates are available for parties of 20 or more.
- Group rates are inclusive of dinner, show, tax and gratuity.
- Every 21st ticket is complimentary.
- Complimentary dinner and show ticket for motorcoach driver.
- Seating available prior to individual ticket sales.
- Personal greeting upon arrival.
- Plenty of free and self parking on site.
- Promotional materials available.
- Deposit of 10% is due upon booking a reservation.
- Final payment and group count is required three weeks prior to show date.
- \$10 processing fee for all shows

MAIN STAGE



SEC
A

Show only tickets not available in Section A.

SEC
B

Sections B and C are reserved for parties of five or more.

SEC
C

SEC
D

The shaded area is considered center.

SEC
E

SEC
F

SEC
G

CAPACITY 382

Subject To Change

WELCOME TO BROADWAY PALM'S 31ST SEASON

Dear Group Leader:

I would like to start off by sincerely thanking you for your support and for being one of our current group leaders! We celebrated our 30th Anniversary Season in grand fashion with a stellar lineup of hits and we are thrilled to follow it up this year with another season of terrific shows and concerts.

I'm excited to announce that our group tickets have NOT increased, and we are offering the same discounted pricing as last year. This is our way of saying thank you for your loyal support of the Broadway Palm. We have updated our group guidelines to include a 10% deposit due upon booking, a \$10 processing fee and a three week confirmation with final payment for each individual reservation.

We have lined up another supercalifragilisticexpialidocious season of shows, including some of our most popular productions such as *Elf The Musical* and *Hairspray*. Broadway Palm will be the regional theatre premiere for the productions *Elvis A Musical Revolution* and *Beautiful, The Carole King Musical*. We can't wait to get spooky with *The Addams Family*, a new musical comedy, and spend the summer flying with *Mary Poppins*. Also, most of our concerts are brand new and will have you dancing on your feet and the Off Broadway Palm shows are sure to have you laughing out loud.

Thank you again for being a group leader – we appreciate your continued support and look forward to entertaining you!

Theatrically yours,



William T. Prather

Owner & Executive Producer

PRATHER PRODUCTIONS

Providing exceptional entertainment and customer service that creates a fun and memorable experience while enriching the communities we serve.



BroadwayPalm.com
Fort Myers, FL

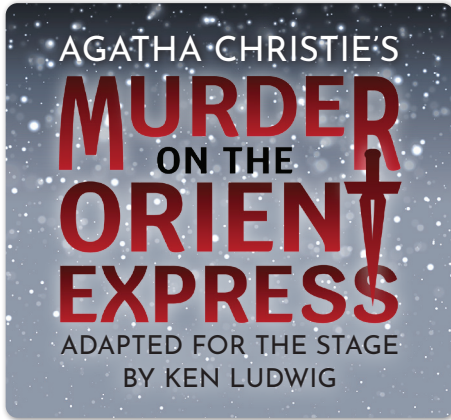


DutchApple.com
Lancaster, PA



PratherProductions.com

MAIN STAGE



AUGUST 18 – SEPTEMBER 16, 2023

This clever adaptation of the Agatha Christie classic boasts glamour, intrigue, suspense and humor. The luxurious Orient Express is surprisingly full for the time of the year, but by morning the train is one passenger fewer. An American tycoon lies stabbed to death, his door locked from the inside. Isolated and with a killer among them, the passengers rely on detective Hercule Poirot to find the murderer before he or she strikes again.

AUGUST

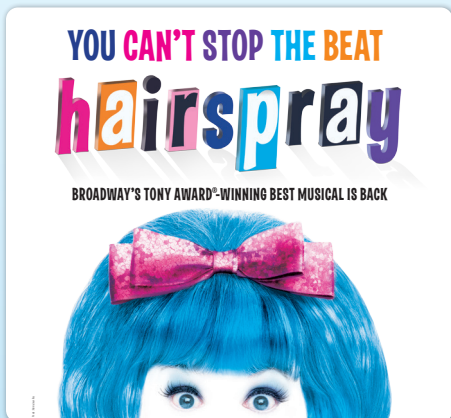
SU	M	T	W	TH	F	SA
		1	2	3	4	5
6	7	8	9	10	11	12
13	14	15	16	17	18	19
20	21	22	23	24	25	26
27	28	29	30	31		

■ Matinee ■ Evening ■ Twilight

SEPTEMBER

SU	M	T	W	TH	F	SA
					1	2
3	4	5	6	7	8	9
10	11	12	13	14	15	16
17	18	19	20	21	22	23
24	25	26	27	28	29	30

■ Matinee ■ Evening ■ Twilight



SEPTEMBER 22 – OCTOBER 28, 2023

It's 1962 and Baltimore's Tracy Turnblad, a big girl, with big hair and an even bigger heart, wins a spot on the local TV dance program and overnight is transformed from an outsider to a teen celebrity. Can this new trendsetter win the heart of heartthrob Link Larkin and integrate a television show without denting her 'do? The upbeat score includes *Good Morning Baltimore*, *You Can't Stop the Beat* and the title song, *Hairspray*.

SEPTEMBER

SU	M	T	W	TH	F	SA
					1	2
3	4	5	6	7	8	9
10	11	12	13	14	15	16
17	18	19	20	21	22	23
24	25	26	27	28	29	30

■ Matinee ■ Evening ■ Twilight

OCTOBER

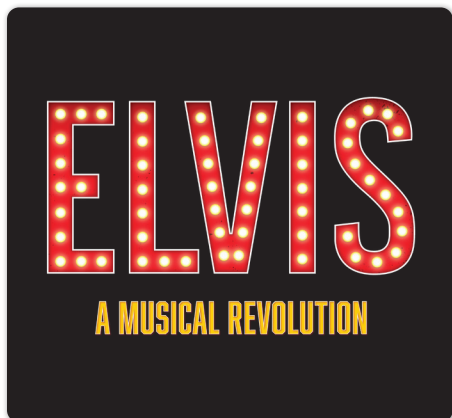
SU	M	T	W	TH	F	SA
1	2	3	4	5	6	7
8	9	10	11	12	13	14
15	16	17	18	19	20	21
22	23	24	25	26	27	28
29	30	31				

■ Matinee ■ Evening ■ Twilight



**NOVEMBER 10 -
DECEMBER 25, 2023**

Based on the popular film, this hilarious musical comedy follows Buddy the Elf in his quest to find his true identity. Raised in the North Pole, Buddy is unaware that he is human until his enormous size and poor toy-making abilities cause him to face the truth. Buddy embarks on a journey to New York. This holiday classic is sure to bring out the true spirit of Christmas...after all, the best way to spread Christmas Cheer is singing loud for all to hear!

[illegible]

**DECEMBER 30 -
FEBRUARY 17, 2024**

This official Elvis Presley bio-musical takes a closer look at the rock star and cultural icon whose impact shaped the history of music. Spanning from his childhood in Tupelo, Mississippi to his triumphant 1968 “Comeback Special” and his ascent to be “The King.” You’ll hear iconic hits including *All Shook Up*, *Heartbreak Hotel*, *Burning Love*, *Hound Dog*, *Don’t Be Cruel*, *Jailhouse Rock*, *Blue Suede Shoes* and more!

DEC/JAN

SU	M	T	W	TH	F	SA
					DEC 30	
31	JAN 1	2	3	4	5	6
7	8	9	10	11	12	13
14	15	16	17	18	19	20
21	22	23	24	25	26	27
28	29	30	31			

FEBRUARY

SU	M	T	W	TH	F	SA
					1	2
3	4	5	6	7	8	9
10	11	12	13	14	15	16
17	18	19	20	21	22	23
24	25	26	27	28	29	

■ Matinee
 ■ Evening
 ■ Twilight

MAIN STAGE



FEBRUARY

U	M	T	W	TH	F	SA
					1	2
3	4	5	6	7	8	9
10	11	12	13	14	15	16
17	18	19	20	21	22	23
24	25	26	27	28	29	

■ Matinee ■ Evening ■ Twilight

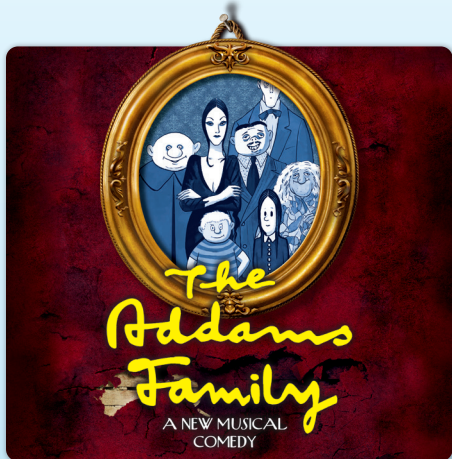
MARCH/APRIL

SU	M	T	W	TH	F	SA
					1	2
3	4	5	6	7	8	9
10	11	12	13	14	15	16
17	18	19	20	21	22	23
24	25	26	27	28	29	30
31	1	2	3	4	5	6

■ Matinee ■ Evening ■ Twilight

FEBRUARY 23 – APRIL 6, 2024

The Tony and Grammy Award-winning musical tells the true story of Carole King's remarkable journey from teenage songwriter to Rock & Roll Hall of Fame. Featuring over 24 classics including *You've Got a Friend*, *One Fine Day*, *Up on the Roof*, *You've Lost That Lovin' Feeling*, *Will You Love Me Tomorrow* and *Natural Woman*, this crowd-pleasing phenomenon is filled with songs you remember and a story you'll never forget.



APRIL

U	M	T	W	TH	F	SA
	1	2	3	4	5	

■ Matinee ■ Evening ■ Twilight

MAY

SU	M	T	W	TH	F	SA
			1	2	3	4
5	6	7	8	9	10	11
12	13	14	15	16	17	18
19	20	21	22	23	24	25
26	27	28	29	30	31	

■ Matinee ■ Evening ■ Twilight

APRIL 12 – MAY 25, 2024

America's darkest family comes to life in this comical feast that embraces the wackiness in every family and features an original story about love, family, honesty and growing up. Wednesday Addams, the ultimate princess of darkness, has grown up and fallen in love with a sweet, smart young man from a respectable family. Everything will change on the fateful night they host a dinner for Wednesday's "normal" boyfriend and his parents.



**MAY 31 -
JUNE 22, 2024**

Jump and jive with over 30 songs from the Big Band Era! Swing exploded out of Harlem and shattered cultural and ethnic barriers and now you can relive the dance phenomenon that swept the world. This all singing, all dancing extravaganza features *It Don't Mean a Thing If It Ain't Got that Swing*, *Boogie Woogie Bugle Boy*, *In the Mood*, *Sing Sing Sing*, *Stompin' at the Savoy*, *Cry Me a River*, *Bounce Me Brother* and more.

MAY

SU	M	T	W	TH	F	SA
			1	2	3	4
5	6	7	8	9	10	11
12	13	14	15	16	17	18
19	20	21	22	23	24	25
26	27	28	29	30	31	

■ Matinee ■ Evening ■ Twilight

JUNE

SU	M	T	W	TH	F	SA
						1
2	3	4	5	6	7	8
9	10	11	12	13	14	15
16	17	18	19	20	21	22
23	24	25	26	27	28	29
30						

■ Matinee ■ Evening ■ Twilight



**JUNE 28 –
AUGUST 10, 2024**

Everyone's favorite nanny is back! Young Jane and Michael have sent many a nanny packing before Mary Poppins arrives. Using a combination of magic and common sense, she helps teach the family how to value each other again. Mary Poppins is an enchanting mixture of an irresistible story, breathtaking dance numbers and unforgettable songs such as *Chim Chim Cher-ee*, *A Spoonful of Sugar* and *Supercalifragilisticexpialidocious*.

[illegible]

OFF BROADWAY



OCTOBER

SU	M	T	W	TH	F	SA
1	2	3	4	5	6	7
8	9	10	11	12	13	14
15	16	17	18	19	20	21
22	23	24	25	26	27	28
29	30	31				

Matinee Evening Twilight

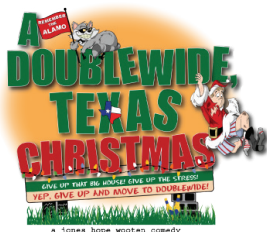
NOVEMBER

SU	M	T	W	TH	F	SA
			1	2	3	4
5	6	7	8	9	10	11
12	13	14	15	16	17	18
19	20	21	22	23	24	25
26	27	28	29	30		

Matinee Evening Twilight

OCTOBER 11 – NOVEMBER 18, 2023

Welcome to Popcorn Falls, a sleepy American town that is forced into bankruptcy when their only claim to fame, their namesake waterfall, dries up. Their only hope is a chance for a grant – if they can open a theater and put on a play! Two actors play over twenty roles in this laugh out loud farce that proves art can save the world.



NOVEMBER

SU	M	T	W	TH	F	SA
			1	2	3	4
5	6	7	8	9	10	11
12	13	14	15	16	17	18
19	20	21	22	23	24	25
26	27	28	29	30		

Matinee Evening Twilight

DECEMBER

SU	M	T	W	TH	F	SA
					1	2
3	4	5	6	7	8	9
10	11	12	13	14	15	16
17	18	19	20	21	22	23
24	25	26	27	28	29	30
31						

Matinee Evening Twilight

NOVEMBER 23 – DECEMBER 25, 2023

It's Christmastime in the tiniest town in Texas, but it's beginning to look a lot like trouble. Adding to the stress of the holiday season, the residents discover that Doublewide is being double-crossed by the County. The eccentric residents take on the "big guys" and by the time the lunacy climaxes you'll have doubled your Christmas spirit.



JANUARY

SU	M	T	W	TH	F	SA
	1	2	3	4	5	6
7	8	9	10	11	12	13
14	15	16	17	18	19	20
21	22	23	24	25	26	27
28	29	30	31			

Matinee Evening Twilight

FEBRUARY

SU	M	T	W	TH	F	SA
				1	2	3
4	5	6	7	8	9	10
11	12	13	14	15	16	17
18	19	20	21	22	23	24
25	26	27	28	29		

Matinee Evening Twilight

JANUARY 11 – FEBRUARY 25, 2024

The hysterical Ray Cooney farce about London cab driver John Smith who has two separate lives, complete with two wives. He keeps his two lives separate by spending the morning with one wife, and the evening with the other. Hilarity ensues when he is mugged and the police return him to the wrong home at the wrong time.

2023-2024



FEBRUARY 29 – APRIL 14, 2024

The hilarious and touching comedy about five southern women and their everlasting friendships. Free from husbands, kids, and jobs, they meet at the same beach cottage every summer to rekindle their relationships, relax, and laugh. As the years pass, these women rely on one another, through all that life flings at them.

FEBRUARY/MARCH

SU	M	T	W	TH	F	SA
3	4	5	6	7	8	9
10	11	12	13	14	15	16
17	18	19	20	21	22	23
24	25	26	27	28	29	30
31						

Matinee Evening Twilight

APRIL

SU	M	T	W	TH	F	SA
	1	2	3	4	5	6
7	8	9	10	11	12	13
14	15	16	17	18	19	20
21	22	23	24	25	26	27
28	29	30				

Matinee Evening Twilight

Perfect Wedding



APRIL 18 – JUNE 2, 2024

A groom wakes on his wedding morning to a strange girl in bed beside him. When the bride arrives, they trap the girl in the bathroom. The best man pretends that the girl is his girlfriend, while his real life girlfriend has to be kept in the dark. Chaos reaches nuclear proportions when the bride's parents arrive and the hotel staff get in on the act!

APRIL

SU	M	T	W	TH	F	SA
	1	2	3	4	5	6
7	8	9	10	11	12	13
14	15	16	17	18	19	20
21	22	23	24	25	26	27
28	29	30				

Matinee Evening Twilight

MAY/JUNE

SU	M	T	W	TH	F	SA
			1	2	3	4
5	6	7	8	9	10	11
12	13	14	15	16	17	18
19	20	21	22	23	24	25
26	27	28	29	30	31	
2						

Matinee Evening Twilight

OFF BROADWAY STAGE

8 7 6 5 AA

A 8 7 6 5 4 3 2 1 A

4 3 2 1 AA

8 7 6 5 BB

B 8 7 6 5 4 3 2 1 B

4 3 2 1 BB

8 7 6 5 CC

C 8 7 6 5 4 3 2 1 C

4 3 2 1 CC

8 7 6 5 DD

D 8 7 6 5 4 3 2 1 D

4 3 2 1 DD

E 8 7 6 5 4 3 2 1 E

11 10 9 8 7 EE

6 5 4 3 2 1 EE

Subject To Change

THEATRE ENTRANCE

3 2 1 FF

CONCERT SERIES



**RAT
PACK
Live!**

November 1, 2, 4, 5, 2023 • 1 p.m.
November 1-4, 2023 • 7:30 p.m.

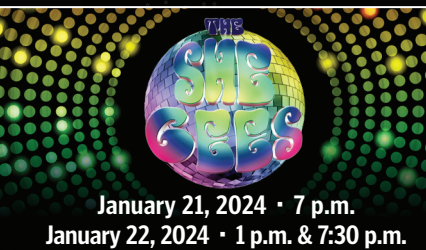
Take a trip back to the 1960s, when the Rat Pack – Frank Sinatra, Sammy Davis Jr. and Dean Martin brought fame and recognition to Las Vegas. They reunite on stage to belt out a few classics including *Luck Be a Lady*, *Lady is a Tramp* and *New York, New York*. These three cool cats really know how to have a good time. By the end of the show, you will too.



**STARDUST MEMORIES
BIG BAND**

December 11, 2023
1 p.m. & 7:30 p.m.

Swing into the holidays with the best in Big Band entertainment! Stardust Memories Big Band is comprised of some of South Florida's finest professional musicians and they're ready to bring you festive Big Band arrangements of your favorite holiday hits!



**THE
BEE GEES**

January 21, 2024 • 7 p.m.
January 22, 2024 • 1 p.m. & 7:30 p.m.

The spirit of the disco legends live on with this all-female tribute to the treasured musical memories of the Bee Gees! You'll hear *Night Fever*, *Stayin' Alive*, *More Than A Woman*, *You Should Be Dancing*, *How Deep Is Your Love* and so many more!



**Buffett's
MARGARITAVILLE**

February 4, 2024 • 7 p.m.
February 5, 2024 • 1 p.m. & 7:30 p.m.

Calling all Parrotheads – *It's Five O'Clock Somewhere* so get ready to be ...wastin' away again in *Margaritaville* with this dynamic tribute to the incomparable Jimmy Buffett! Songs include *Cheeseburger in Paradise*, *Changes In Latitudes*, *A Pirate Looks At Forty* and so many more!



**PIANO MEN
GENERATIONS**

March 3, 2024 • 7 p.m.
March 4, 2024 • 1 p.m. & 7:30 p.m.

Two men, two pianos and the music of two legends: Billy Joel and Elton John! Celebrate these two musical influences with the amazing father and son duo Terry and Nick Davies! The classic hits include *New York State of Mind*, *The Piano Man*, *Rocket Man* and *Candle in The Wind*.



MIRAGE
VISIONS OF
FLEETWOOD MAC

March 24, 2024 • 7 p.m.
March 25, 2024 • 1 p.m. & 7:30 p.m.

This ultimate tribute band was heartily praised by Stevie Nicks herself! Mirage recreates the classic lineup with a musical celebration of the best of Fleetwood Mac including *Landslide*, *Gypsy*, *Go Your Own Way*, *Dreams*, *The Chain*, *Little Lies* and more!

BROADWAY PALM MAIN STAGE

GROUP NAME	
LAST NAME	FIRST NAME
ADDRESS	
CITY / STATE / ZIP CODE	
PHONE	
EMAIL ADDRESS	

Run for Your Wife

Sweet Delilah Swim Club		
Perfect Wedding		
BROADWAY DAI M CONCEPT SERIES		

Indicate # of tickets and showtime

Rat Pack Live!	Nov 1, 2, 4, 5 Ma
Stardust Memories Big Band	Mat 12/11/23

The She Gees	1/21/24 ^{Twi}	1/22/24
1	1	1
2	2	2
3	3	3
4	4	4
5	5	5
6	6	6
7	7	7
8	8	8
9	9	9
10	10	10
11	11	11
12	12	12
13	13	13
14	14	14
15	15	15
16	16	16
17	17	17
18	18	18
19	19	19
20	20	20
21	21	21
22	22	22
23	23	23
24	24	24
25	25	25
26	26	26
27	27	27
28	28	28
29	29	29
30	30	30
31	31	31
32	32	32
33	33	33
34	34	34
35	35	35
36	36	36
37	37	37
38	38	38
39	39	39
40	40	40
41	41	41
42	42	42
43	43	43
44	44	44
45	45	45
46	46	46
47	47	47
48	48	48
49	49	49
50	50	50
51	51	51
52	52	52
53	53	53
54	54	54
55	55	55
56	56	56
57	57	57
58	58	58
59	59	59
60	60	60
61	61	61
62	62	62
63	63	63
64	64	64
65	65	65
66	66	66
67	67	67
68	68	68
69	69	69
70	70	70
71	71	71
72	72	72
73	73	73
74	74	74
75	75	75
76	76	76
77	77	77
78	78	78
79	79	79
80	80	80
81	81	81
82	82	82
83	83	83
84	84	84
85	85	85
86	86	86
87	87	87
88	88	88
89	89	89
90	90	90
91	91	91
92	92	92
93	93	93
94	94	94
95	95	95
96	96	96
97	97	97
98	98	98
99	99	99
100	100	100

Buffett's Margartaville	2/4/24 Twi	2/5/24 Twi
Piano Men Generations	3/3/24 Twi	3/4/24 Twi

VILLAGE VISIONS OF FLEETWOOD VIMAC

[illegible]

BROADWAY PALM CONCERT SERIES

Indicate # of tickets and showtime	Circle One	Meal & Show Only
Rat Pack Live!	Nov 1, 2, 4, 5 Mat Nov 1, 2, 3, 4 Eve	
Stardust Memories Big Band	12/11/23 Mat 12/11/23 Eve	
The She Gees	1/22/24 ^{Twi} Mat 1/22/24 Eve	
Buffett's Margaritaville	2/4/24 ^{Twi} Mat 2/5/24 Mat 2/5/24 Eve	
Piano Men Generations	3/3/24 ^{Twi} Mat 3/4/24 Mat 3/4/24 Eve	
Mirage Visions of Fleetwood Mac	3/24/24 ^{Twi} Mat 3/25/24 Mat 3/25/24 Eve	

Swing!	Mary Poppins	Popcorn Falls	Doublewide Christmas	Run For Your Wife	Sweet Delilah Swim Club	Perfect Wedding
--------	--------------	---------------	----------------------	-------------------	-------------------------	-----------------



Mail, drop off or email completed form to:
Broadway Palm Dinner Theatre
Attn: Group Sales
1380 Colonial Boulevard
Fort Myers, FL 33907
Kathy@broadwaypalm.com • 239.278.4422

For Office Use Only

NOTES:

TICKET RATES

Ticket Type	Regular	Group
Broadway Palm Evening	\$80*	\$70*
Broadway Palm Friday & Saturday Evening	\$85*	\$75*
Broadway Palm Matinee	\$70*	\$60*
Broadway Palm Show Only	\$60*	\$55*
Off Broadway Evening	\$70	\$60
Off Broadway Matinee	\$65	\$55
Off Broadway Show Only	\$55	\$50
Broadway Palm Concert - Meal & Show	\$85	\$75
Broadway Palm Concert - Show Only	\$70	\$65

*Tickets for **Elf, Elvis and Beautiful** are an additional \$10 each.

- Group rates are available for parties of 20 or more.
- \$10 processing fee will be applied to each show.
- 10% deposit is required upon booking a reservation for each show.
- Final payment and group count is required three weeks prior to show date.

Method of payment (circle one):



ACCOUNT NUMBER

RES

DATE & TIME RECEIVED

CARD NUMBER

CVV/SECURITY CODE